

# HLA-2050 P

## Hybrid Line Array Series



EXPERIENCE THE SOUND  
OF TRUE ENGAGEMENT

### True Sound Engagement in Large Venues

#### DESCRIPTION

The **HLA-2050 P** is a hybrid integration of a twenty element J-array loudspeaker and dipole directional low frequency loudspeakers. It is powered by a 4500-watt Powersoft amplifier with on-board DSP.

The J-array portion contains twenty 3.5" mid-frequency drivers and twenty ribbon high frequency drivers. The dipole has four 6.5" mid-bass drivers and two 15" high output low frequency drivers, in a unique staged configuration to extend vertical LF control.

It has been preconfigured in an asymmetrical 120°H x 50° V coverage pattern with vertical directivity to 96 Hz, and low frequency response to 50 Hz.



#### KEY FEATURES

- Asymmetrical 120° H x 50° V Coverage
- 4500-watts of class D power and DSP by Powersoft
- Vertical Control to 96 Hz

#### APPLICATIONS

- Churches
- Lecture Halls
- Presentation Spaces
- Performing Arts Centers

#### DESCRIPTIVE DATA

System Configuration:	Biamped hybrid integration of a curvilinear M/H line array and a low frequency dipole
Components & Loading:	(20) 3.5" MF drivers; (20) 3" ribbon HF drivers; (4) 6.5" mid-bass drivers; & (2) 15" LF drivers
Input:	Balanced line level with XLR
Enclosure Type:	Curvilinear array: sealed enclosure Dipole mid-bass: sealed enclosure Dipole LF: sealed enclosure
Enclosure Material:	Steel, aluminum & Baltic Birch plywood
Finish:	Black or White standard (custom colors available)
Suspension Hardware:	(2) 3/8-16 threaded points on each side; steel yoke included
Grille:	Painted perforated steel

#### NOMINAL DATA

Frequency Response:	50 – 20,000 Hz $\pm 3$ dB
Managed Class D Power:	6000 W RMS
Maximum Long-Term Output:	132 dB
Peak Output:	138 dB
Nominal Coverage Angles:	120° H x 50° V
Dimensions	Height: 67.13" / 1705 mm Width: 21.13" / 537 mm Depth: 15.00" / 381mm
Net Weight:	216 lbs / 98.2 kg
Shipping Weight:	246 lbs / 111.8 kg

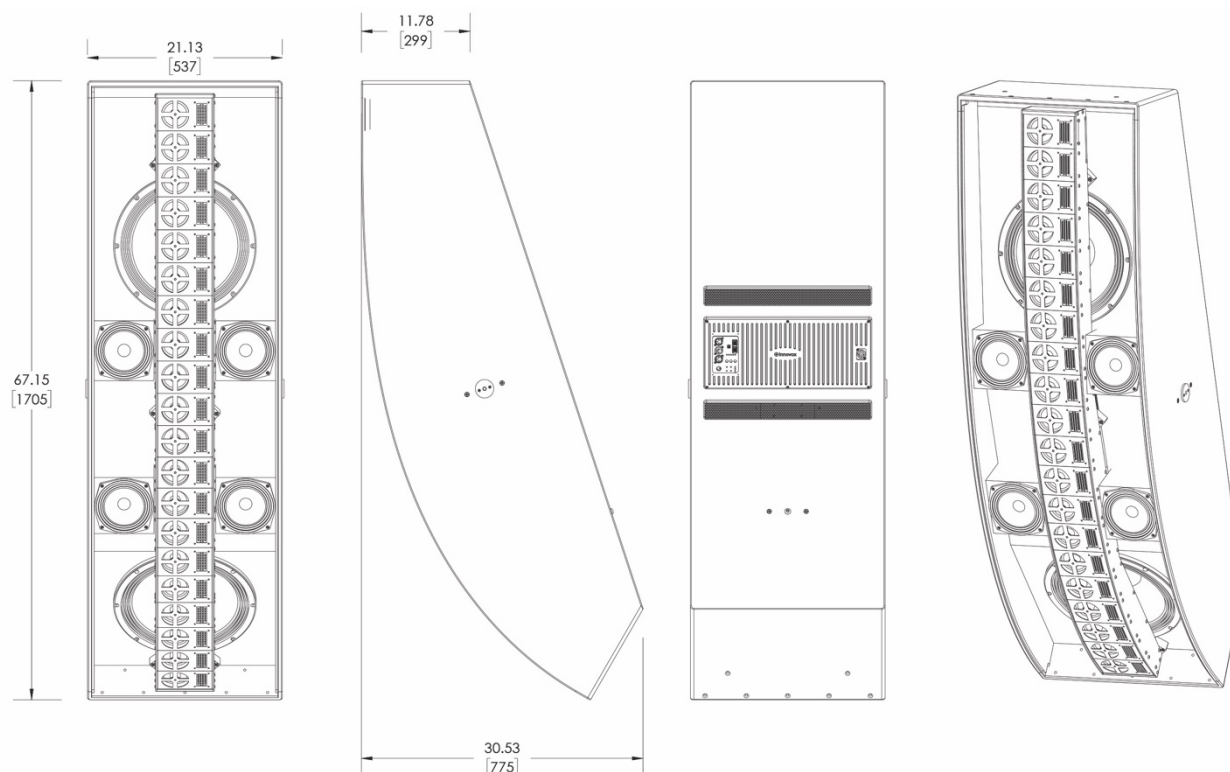
# HLA-2050 P

Hybrid Line Array Series



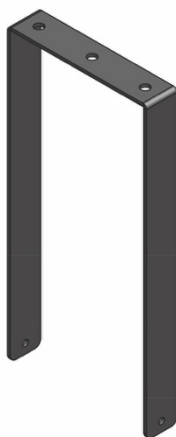
EXPERIENCE THE SOUND  
OF TRUE ENGAGEMENT

## DIMENSIONAL DRAWINGS



## INCLUDED HARDWARE

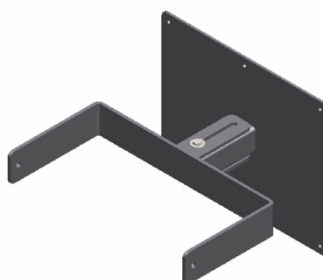
### U-bracket



## OPTIONAL HARDWARE

### Wall-Mount

HLA-9-WM



[innovoxaudio.com](http://innovoxaudio.com)

296 Pascal Street • St. Paul, MN 55104