

HLA-2035 RP

Hybrid Line Array Series



EXPERIENCE THE SOUND
OF TRUE ENGAGEMENT

True Sound Engagement in Large Venues

DESCRIPTION

The **HLA-2035 RP** is a hybrid integration of a twenty element J-array loudspeaker and dipole directional low frequency loudspeakers. It is powered by a 6000-watt, rack-mounted Powersoft amplifier with on-board DSP.

The J-array portion contains twenty 3.5" mid-frequency drivers and twenty ribbon high frequency drivers. The dipole has four 6.5" mid-bass drivers and two 15" high output low frequency drivers, in a unique staged configuration to extend vertical LF control.

It has been preconfigured in an asymmetrical 120° H by 35° V coverage pattern with vertical directivity to 96 Hz, and low frequency response to 50 Hz.



KEY FEATURES

- Key Features
- Asymmetrical 120° H x 35° V Coverage
- 6000-watts of Class D Power and DSP by Powersoft
- Maintains Vertical Control to 96 Hz

APPLICATIONS

- Churches
- Lecture Halls
- Presentation Spaces
- Performing Arts Centers

DESCRIPTIVE DATA

System Configuration:	Biamped hybrid integration of a curvilinear M/H line array and a low frequency dipole
Components & Loading:	(20) 3.5" MF drivers; (20) 3" ribbon HF drivers; (4) 6.5" mid-bass drivers; & (2) 15" LF drivers
Input:	Balanced line level with XLR
Enclosure Type:	Curvilinear array: sealed enclosure Dipole mid-bass: sealed enclosure Dipole LF: sealed enclosure
Enclosure Material:	Steel, aluminum & Baltic Birch plywood
Finish:	Black or White standard (custom colors available)
Suspension Hardware:	(2) 3/8-16 threaded points on each side; steel yoke included
Grille:	Painted perforated steel

NOMINAL DATA

Frequency Response:	50 – 20,000 Hz \pm 3 dB
Managed Class D Power:	6000 W RMS
Maximum Long-Term Output: Peak Output:	132 dB 138 dB
Nominal Coverage Angles:	120° H x 35° V
Dimensions	Height: 72.86" / 1851 mm Width: 21.13" / 537 mm Depth: 15.00" / 381mm
Net Weight:	207 lbs / 94.1 kg
Shipping Weight:	237 lbs / 107.7 kg

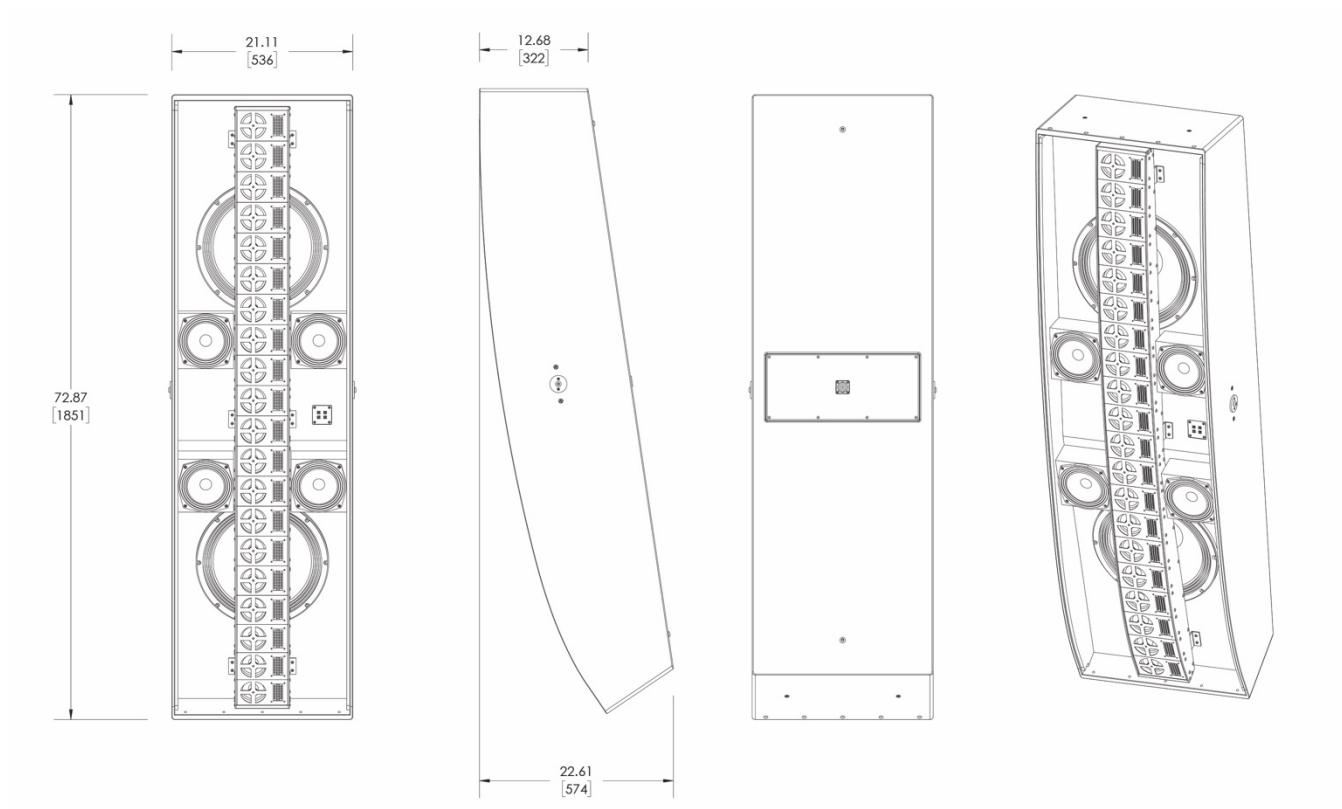
HLA-2035 RP

Hybrid Line Array Series



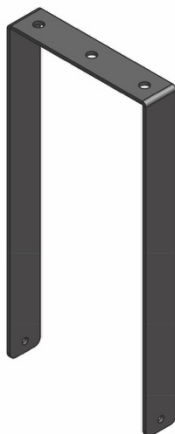
EXPERIENCE THE SOUND
OF TRUE ENGAGEMENT

DIMENSIONAL DRAWINGS

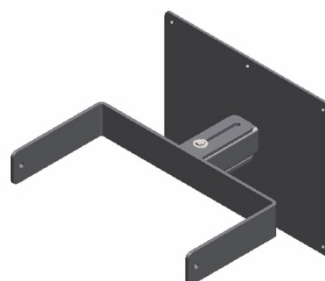


INCLUDED HARDWARE

U-bracket



OPTIONAL HARDWARE



Wall-Mount

HLA-9-WM

innovoxaudio.com

296 Pascal Street • St. Paul, MN 55104